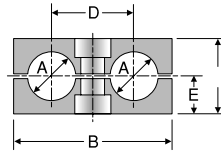


RBP
Clamp Halves

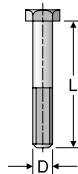


TUBE FITTING PART #	GROUP #	A Metric Tube Size	A Inch Pipe Size	A Inch Tube Size	B (mm)	C (mm)	D (mm)	E (mm)	STANDARD FROM STOCK	
RBP106X	1	6							•	
RBP106.4X		6.4		1/4					•	
RBP108X		8				36	27	20	13.5	•
RBP109.5X		9.5		3/8						•
RBP110X		10								•
RBP112X		12							•	
RBP212.7X	2	12.7							•	
RBP213.5X		13.5	R1/4						•	
RBP214X		14							•	
RBP215X		15		1/2		53	26	29	13	•
RBP216X		16								•
RBP217.2X	17.2		R3/8						•	
RBP218X		18							•	
RBP319X	3	19							•	
RBP320X		20							•	
RBP321.3X		21.3	R1/2			67	37	36	18.5	•
RBP322X		22								•
RBP325X		25								•
RBP426.9X	4	26.9	R3/4						•	
RBP428X		28			82	42	45	21	•	
RBP430X		30							•	
RBP532X	5	32							•	
RBP533.7X		33.7	R1						•	
RBP535X		35				106	54	56	27	•
RBP538X		38								•
RBP542X		42								•

Material codes for clamp halves:
 Polypropylene - RBP
 inside plain - RBPG (for hose)
 Polyamide 6 - RBN
 inside plain - RBNG (for hose)

SSB
Hex Head Bolt

TUBE FITTING PART #	GROUP #	D (mm)	L (mm)	STANDARD FROM STOCK
SSLA2/SSB1X	1	M6 x 1	35	•
SSB2X	2	M8 x 1	35	•
SSB3X	3	M8 x 1	45	•
SSB4X	4	M8 x 1	50	•
SSB5X	5	M8 x 1	60	•



ISB
Cap Screws

TUBE FITTING PART #	GROUP #	D (mm)	L (mm)	STANDARD FROM STOCK
ISB1X	1	M6 x 1	35	•
ISB2X	2	M8 x 1	35	•
ISB3X	3	M8 x 1	45	•
ISB4X	4	M8 x 1	50	•
ISB5X	5	M8 x 1	60	•



Dimensions and pressures for reference only, subject to change.